



The UPDATE

**News and Information for MA EI providers!
February 2014**

Important Dates:



Tuesday, February 25, 2014 @ 10am: DPH MONTHLY WEBINAR

TOPIC: BDI-2: what are we really measuring? Linking administration and scoring to data collection and reporting and other fun things!

Thursday, March 13, 2014 1:30-3:30pm Public Hearing for MA Part C application at the Best Western in Marlboro (after the ICC meeting)

SAVE THE DATE: EI Program Directors Session JUNE 18th, 2014

Announcements:

Public Hearing Notice - The Massachusetts Department of Public Health, in cooperation with the Massachusetts Interagency Coordinating Council, will hold a hearing on the Commonwealth's application for 28th year funding under Part C.

PURPOSE AND BACKGROUND OF THE HEARING:

This hearing is being held for the specific purpose of discussing the Department of Public Health's 28th year grant for funding under Part C.

Part C of the Individuals with Disabilities Education Act, P.L. 108-446, provides funds to assist states in providing services for infants and toddlers with disabilities. The hearing is about Massachusetts' grant application for 28th Year funding under Part C and is open to families, service providers, and professionals serving young children and families.

The Hearing is scheduled on **Thursday, March 13, 2014 from 1:30 – 3:30 after the ICC Meeting** at the Best Western Royal Plaza Hotel and Conference Center, 181 Boston Post Road West, Marlboro, MA. A formal notice of the hearing and advertisement placed in the Boston Globe will be forwarded to providers shortly.

NCSEAM Family Survey Update

Remember that March is NCSEAM Family Survey month. Programs will receive a list of eligible children and families, those who have been enrolled for at least six months and who did not complete a Survey in October, via secure email shortly. Each program received enough Surveys for both the October 2013 and March 2014 distribution in the shipment delivered last August. We do have extra Surveys at the Department should you run short. Tools to support Service Coordinators to explain the purpose of the Survey and families to get tips on how to fill it out are available on the Parent Leadership Project website at: www.eiplp.org

Any questions, contact Suzanne Gottlieb at: suzanne.gottlieb@state.ma.us

REMINDER - Submission of TRANSITION SURVEY export file

Timeliness of TSS Data Entry

- LEA Referral information should be entered into the TSS as close to the LEA referral as possible but no later than two weeks from the LEA Referral Date (*this will prevent your program from being non-compliant for the DESE submission that is handled by DPH*)
- TPC data should be entered within one month after the child is discharged from your EI program
- Children who are close to being late referrals to EI (*EI referral occurs when the child is 30 to 32 months of age*) should be referred to an LEA in a timely manner, their LEA referral data entered into the TSS within 2 weeks from the LEA Date and the TSS transmitted as soon as possible



Submission of TSS Data

- If you have not entered anything new into the TSS since the last time you submitted this file then you do NOT need to re-send it to DPH
 - Make sure that you email the .csv file, not the .mdb file (*the .csv file is created when you exit the TSS and is located in the same folder where your TSS is located*)
 - Submit the TSS once a day if entering any new information
 - Submit your TSS export file to eiis@eohhs-sfed.state.ma.us via SecureMail
- If you have any questions or would like to provide feedback regarding the Transition Survey System please contact Jean Shimer at (617) 624-5526 or jean.shimer@state.ma.us.

Specialty Services ANNOUNCEMENTS:

Upcoming Request for Information for Specialty Services for ASD:

In order to ensure access to intensive behavioral services for children with ASD and to offer some degree of parent choice throughout the state, DPH will issue a Request for Information (RFI) that invites interested providers (both current SSPs and potential new ones) to submit applications to be approved as SSPs in early March. This process will result in an expanded list of approved Specialty Service Programs that EIPs can utilize to meet the needs of children with ASD and their families. All applicants will be required to meet a variety of DPH specifications, one of which is that they must provide services within currently established catchment areas that align with EIP service areas.

This decision was based on an analysis of SSP claims, information provided by EIPs in the most recent Annual Report, and consumer feedback. The announcement of the RFI will be sent to current SSPs, the 40+ programs who have indicated an interest in becoming part of the system, and to EIP directors. Current SSPs have been informed about the RFI. EIP directors may share the announcement with other ASD providers, but are encouraged to check in with Tracy Osbahr to find out if local programs they are aware of are already on the “interested providers” list.

Autism and Developmental Diagnostic Specialists in MA:

Contact information for autism and developmental diagnostic specialists in Massachusetts is available on the MA Act Early website at:

www.maactearly.org/diagnostic-services-in-massachusetts.html

A newly opened practice (not yet on the list is) is in Westborough.

Meg Manning, PhD, a licensed psychologist who trained at Boston Children’s Hospital, provides neurodevelopmental and neuropsychological assessments for children ages 10 and under. She specializes in the assessment of autism spectrum disorders for very young children and also provides evaluations for a wide range of other concerns. Contact information: megmanningphd@gmail.com or [508-475-9661](tel:508-475-9661). Website: www.megmanningphd.com
Website contains info re: insurances that are accepted and referral details.

Is there a diagnostician in your area who is not on the MA Act Early list but should be?

Let Tracy know at tracy.osbahr@state.ma.us

The Down Syndrome-Autism Connection:

The Down Syndrome-Autism Connection is a community of parents whose children have both Down syndrome and Autism Spectrum Disorder. Today, DSAC has 30 active families who meet once monthly by online chat to discuss the issues and challenges unique to the Down Syndrome-Autism community. Experts in the field often present on various topics relating to dual diagnosis. New members are welcome. You can contact the DSAC by emailing dsac@mdsc.org. Or visit their [Facebook page](#).



BDI-2 Roundtable Discussions

The EI Training Center is offering 4 round table discussions around the state facilitated by our BDI-2 mentors. These discussions will focus on 1 of 2 topics:

- Giving Feedback to Families
- Using the Interview Procedure

Who should attend: EI specialists who are using the BDI-2 regularly and feel confident in the administration of the tool, but have clinical questions or concerns about giving feedback or the interview procedure. This will be an opportunity to have discussions with peers from other programs.

When and Where:

~~Taunton Area Early Intervention: Using the Interview Procedure~~

~~January 28th from 1-3pm~~

~~Associates in Human Services~~

~~68 Allison Avenue Taunton, MA 02780~~

Step One Early Intervention: Using the Interview Procedure

February 11th from 2:45 to 4:45pm

South Shore Mental Health, 3rd floor training room

500 Victory Road, Quincy, MA 02171

REACH Early Intervention: Giving Feedback to Families

February 24th from 1-3pm

Nonotuck Mill Conference Room

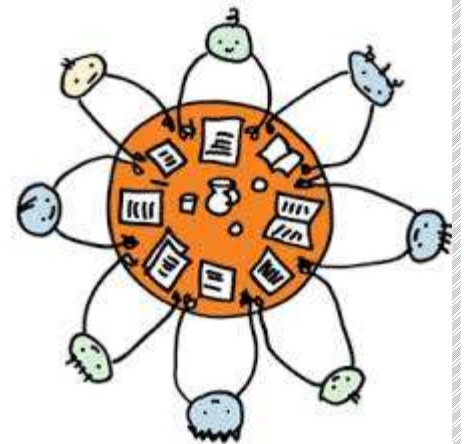
296 Nonotuck St. Florence, MA 01062

Enable Early Intervention: Giving Feedback to Families

March 4th from 12:30-2:30pm

Enable, Inc Administrative Office

605 Neponset Street, Canton, MA 02021



Email: noah.feldman@state.ma.us to register, space is LIMITED!